

241 Deansgate, Manchester, Lancashire, M3 4EL  
Tel: 0161 637 8336  
Email: [contactus@ascendproperties.com](mailto:contactus@ascendproperties.com)  
[www.ascendproperties.com](http://www.ascendproperties.com)

# Ascend

Built on higher standards



Victoria Mill, Houldsworth Street, Reddish, Stockport

£800 PCM

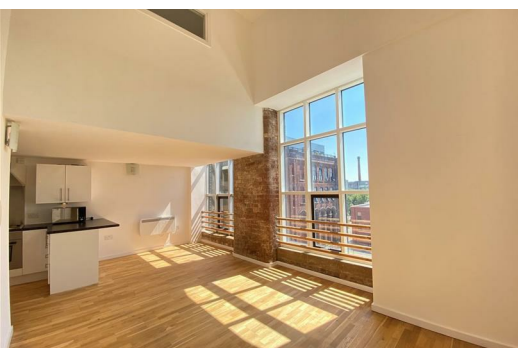
If you fancy living somewhere with oodles of charm and character, this one bed apartment within an award-winning Victorian mill conversion is right up your street.

Featuring spacious open plan living/kitchen space, this unfurnished apartment comprises one double bedroom complete with large windows and high ceilings. In short, this property truly offers modern contemporary living with fantastic transport links. So fantastic, that the train station is just 0.6 miles from the development – in simple terms, that's just a quick 10 minute stroll – perfect for those commuting into Stockport, Manchester city centre and the surrounding areas.

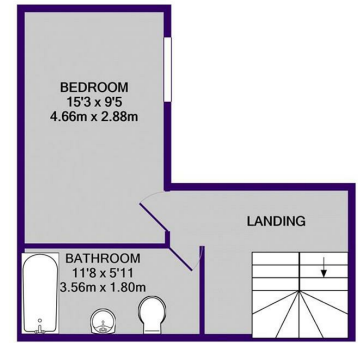
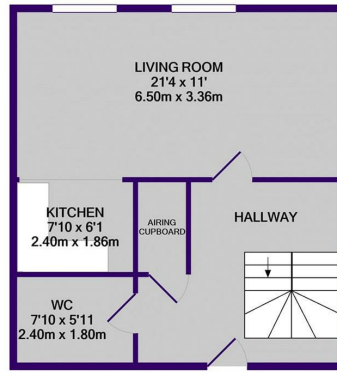
Aside from stunning views across the golf course and Manchester skyline, tenants benefit from an abundance of amenities. A friendly concierge, dedicated bike storage, elevator to all floors (to save your legs), and a secure entry system are just a few of the key USPs of this beautiful development. There's also an on-site gym – a huge bonus for those 'leg days' where it's a mission just to get home!

This property really needs to be seen to be appreciated. Each apartment within this conversion is different, with its own individual charm. With secure private parking and more facilities than you can shake a stick at, there's not much more you could want in a property.

Available Now. 12 month tenancy. Deposit £920 Council Tax Band B.

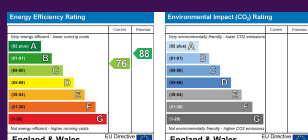
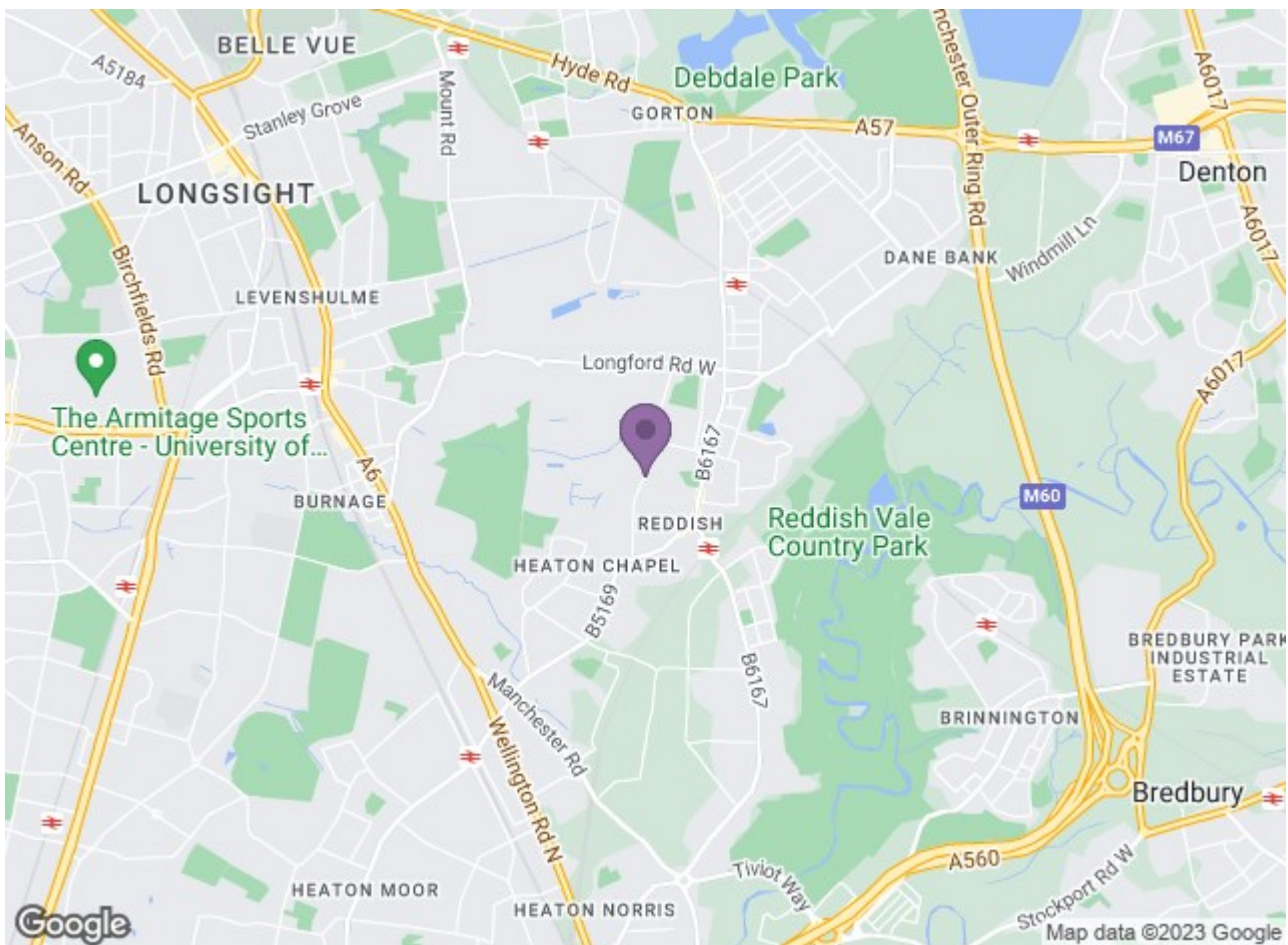






TOTAL APPROX. FLOOR AREA 807 SQ.FT. (75.0 SQ.M.)

Whilst every attempt has been made to ensure the accuracy of the floor plan contained here, measurements of doors, windows, rooms and any other items are approximate and no responsibility is taken for any error, omission, or mis-statement. This plan is for illustrative purposes only and should be used as such by any prospective purchaser. The services, systems and appliances shown have not been tested and no guarantee as to their operability or efficiency can be given.  
Made with Metropix ©2021



**Ascend**  
Built on higher standards